



Tropic Time Layout 1

SUPPLIES

Navy, Yellow, Green and Coral
Tonal Papers

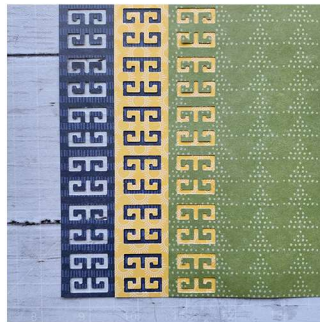
Large Variety Mats

Ancient Key BMC

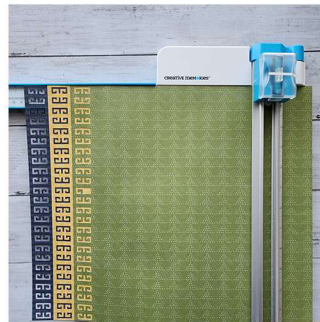
Square Tile Punch



1. Punch the navy and yellow papers with the Ancient Key BMC and trim to 2-3/4". Punch the green paper, but do not trim.



2. Layer the pieces as shown.



3. Trim the excess green paper to make a 12 x 12" background.



4. Trim a 1" strip of a coral paper and adhere to the back of the navy paper.



5. (Optional) Punch several Square Tiles using an accent color (I used the Kraft Paper from the Silver & Gold Collection.) Cut in half on the diagonal to make triangles.



6. Use the photo corners as shown.

